

Making Connection

Annual Report 2025



Museum
London

The Year in Review



58,664
Visitors

23
Exhibitions

587
Artworks &
artifacts exhibited

9,952
Students accessed
education programs

82
Community
partners

72
Artists engaged for
workshops and talks

A message from the Chair of the Board and the Executive Director & CEO

2025 was a year of renewal and transformation at Museum London. We invested in our spaces, our programming, and our presence, enhancing how we welcome visitors, share stories, and engage our community.

At the heart of this work was a renewed focus on how people encounter art and history in our galleries. The revitalization of the Volunteer/Moore Galleries culminated in *All Around Me, All Around You*, a new permanent collection exhibition grounded in multisensory interpretation. With a touch table, audio interview elements, and an interactive digital artwork, the exhibition invites deeper, more inclusive ways of engaging with our collections. This visitor-centred approach also shaped the transformation of Vault 421, formerly a restaurant space, into a dynamic rental venue with a 180-degree view of the Forks

of the Doshkan Ziibi—expanding opportunities for gathering, celebration, and community connection.

How the Museum looks, feels, and communicates also evolved in 2025. We launched a bold new Museum London brand and website—friendly, welcoming, and trustworthy—reflecting the vibrancy of our programming while prioritizing accessibility and extensibility. Updated interior wayfinding and new exterior signage, from gateway signs to flagpole banners, have made the Museum more visible, navigable, and inviting to all.

Behind the scenes, we completed a major capital project to replace our freight elevator, an essential investment ensuring the continued strength of our exhibition schedule and venue rentals. At the same time, our engagement programming expanded to include life drawing classes, poetry exercises, and meditation

sessions, offering new ways to connect with art and contemporary culture. Our social media reach grew by more than 20%, and we collaborated with more community partners than ever, extending the impact of this work onsite and online.

This report reflects a year of meaningful momentum at Museum London. We gratefully acknowledge the financial support of the City of London, Ontario Arts Council, Canada Council for the Arts, Canadian Heritage, the Government of Canada, the Province of Ontario, generous corporate partners and many visionary Londoners. Thank you to our staff, Board, volunteers, artists, partners, funders, and community members. Together, we continue to create space for art, history, and community to thrive in London.

Julie Bevan
Executive Director & CEO

Sarah Padfield
Board Chair

2025 Exhibitions



All Around Me, All Around You

Volunteer/Moore Galleries \ ONGOING

History Goes Digital!

Community Gallery \ ONGOING

London: A History

Lawson Gallery \ ONGOING

Ron Benner: As the Crow Flies

Garden \ ONGOING

Taking the Long View

Volunteer/Moore Galleries \ ONGOING

London: A History Online

londonhistoryonline.museumlondon.ca \ VIRTUAL

***Seeing Red: Movie Posters Indigenized
by CHIPPEWAR***

Atrium \ April 20, 2024 – January 12, 2025

***London Recalling: Traces of Places
from the City's Past***

Barrel Vault – Community Gallery \ June 19, 2024 –
June 22, 2025

Red! Yellow! Blue! The Meanings of Colour

Interior Gallery \ June 19, 2024 – February 9, 2025

3D Histories: A Closer Look

Brownlee Windows \ June 20, 2024 – September 14, 2025

Baapaagimaak: Weaving Endurance

Centre at the Forks \ October 5, 2024 – March 30, 2025

Esmaa Mohamoud: Glorious Bones

Entrance Wall \ November 2, 2024 – May 28, 2025

Ukutula: Our Timeless Journeys

Ivey Galleries \ November 21, 2024 – May 11, 2025

Developed by AGNES and hosted by Museum London

***David Constantino Salazar: Forever (Bird
Botanicals)***

Atrium \ January 25 – July 27, 2025

Mark Stebbins: Supersampler

Interior Gallery \ February 15 – August 24, 2025

Bob Bozak: Realignment

Entrance Wall \ May 31 – October 19, 2025

Fashion: Grit, Glamour and Guts

Ivey Galleries \ May 31 – October 26, 2025

***Black Lives Lived Here: London Family Photos
1910s–1960s***

Atrium \ August 9, 2025 – April 5, 2026

Billy Bert Young: Cloudburst

Interior Gallery \ August 30, 2025 – February 15, 2026

Tools of the Trade

Barrel Vault – Community Gallery \ September 27, 2025 –
May 2, 2027

Tropi-X: Brazilian Art in Canada, 1970s – Now

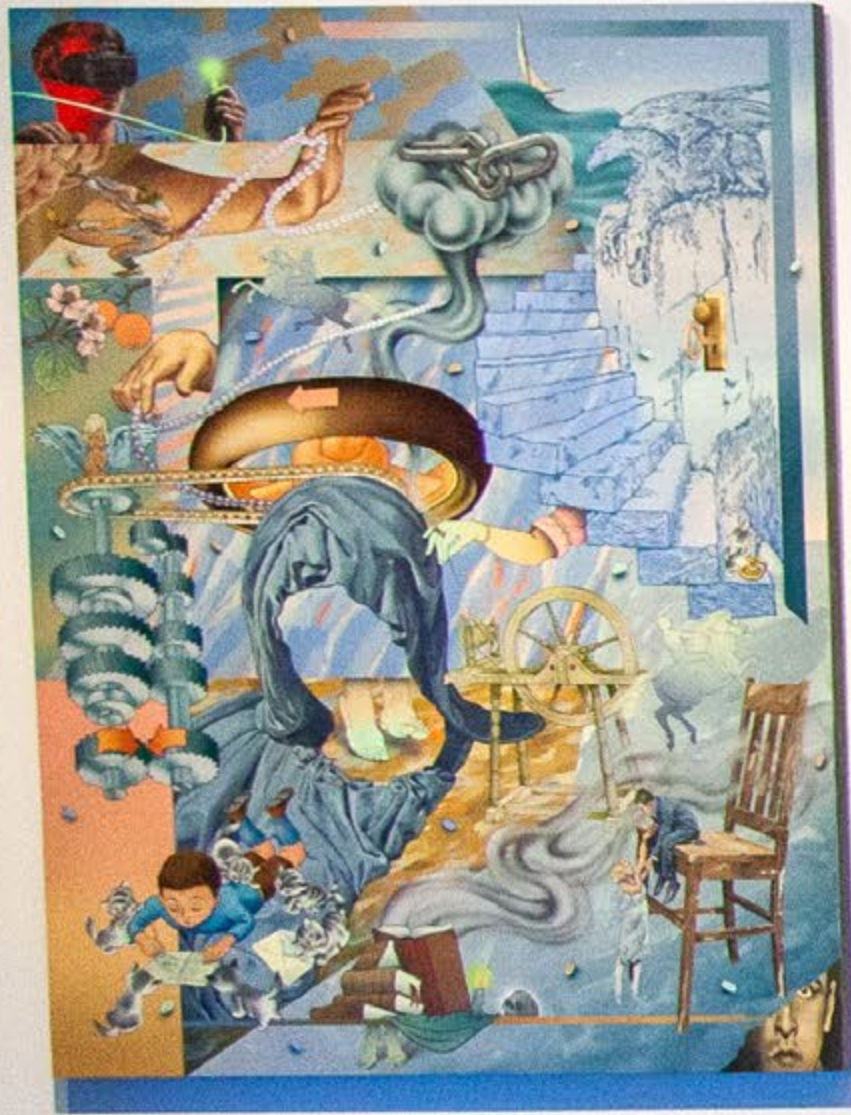
Ivey Galleries \ November 22, 2025 – April 19, 2026

Carpe Diem! Three Stories of Creativity

Brownlee Windows \ September 20, 2025 – March 28, 2027

Lido Pimienta: Love and Resistance

Entrance Wall \ October 25, 2025 – May 31, 2026



Fashion: Grit, Glamour and Guts

Ivey Galleries \ May 31 – October 26, 2025

From evening gowns to work boots, this exhibition brought together striking artworks, compelling garments, three talented local designers, and over 25 community members to show how what we wear shapes and reflects who we are. Whether it's for work or celebration, sports or self-expression, our clothing helps us navigate the world, speak our truth, and connect with our culture and community.

Drawing from Museum London's rich collections and community contributions, *Fashion: Grit, Glamour and Guts* showcased over 100 garments and accessories that span textiles and styles. Visitors encountered everything from 19th-century pieces to contemporary carnival costumes, worn-in shoes to custom tailoring and eveningwear. Alongside these artifacts were powerful works by leading Canadian artists such as Greg Curnoe, Esmaa Mohamoud, Camille Turner and Camal Pirbhai, exploring themes of gender, rebellion, and identity through the lens of what we wear.



All Around Me, All Around You

Volunteer & Moore Galleries \ ONGOING

Drawn from Museum London's permanent collections, *All Around Me, All Around You* brings together artworks and artifacts that reveal a shared truth: careful attention to our surroundings, noticing the ordinary and extraordinary, sparks creative insight. Borrowing its title from a work by London artist Bernice Vincent (1934–2016), the exhibition highlights the enduring impact of regional artists and the rich dialogue between past and present.

Spanning art and history, the exhibition explores how creativity is shaped by daily experience—through our relationships, materials, environments, and memories. Colour, texture, language, and lived experience intertwine, offering new ways to see how inspiration moves through time and place.

This exhibition is made possible thanks to generous support from the John H. & Elizabeth Moore Acquisition Endowment Fund, with additional support from the Museum London Board of Directors.



Tropi-X: Brazilian Art in Canada, 1970s - Now

Ivey Galleries \ November 22, 2025 – April 19, 2026

The largest exhibition of Brazilian art ever presented in Canada, *Tropi-X* brought together more than 70 artworks by 44 artists to explore bold, evolving expressions of identity, culture, and the Canadian diaspora.

At its heart was a rare collection of 1970s-era works donated to Museum London by visionary supporters John and Elizabeth Moore. Donated in 1985, these historical pieces reflect a pivotal moment in Brazilian art history—one shaped by regional diversity and Modernist transformation—comprising vibrant painting, sculpture, and textile works rooted in folklore, syncretic religion, popular culture, and experimentation. Placed in dynamic conversation with contemporary works by 20 Brazilian-Canadian artists living across Canada, the exhibition bridged past and present to challenge inherited narratives and offer new perspectives on belonging and cultural memory.





Outreach & Engagement

In 2025, Museum London continued to grow our range and reach offering more ways for people to engage through art, history, and contemporary culture. We expanded hands-on workshops led by practicing artists, including drawing classes and poetry exercises, and introduced new wellness-centred experiences such as guided meditation activities. Core lecture programs like History Now! and Art Now! continued to thrive through strong partnerships with Huron University and Western University. Signature events—including bi-annual Launch Parties, Canada Day, and Doors Open—also expanded significantly, welcoming more community members than ever before. Alongside these initiatives, our children’s camps and summer walking tours remained vital to our mission of supporting lifelong learning, creativity, and meaningful cultural connection.



Education

In 2025, Museum London's education programs reached 9,952 students from across the region, offering meaningful engagement with art, history, and creative practice through tours, workshops, and dynamic partnerships. A key highlight was piloting our Making Art Creating Community (MACC) Program for secondary school students that culminated in *Living Room Jam Sesh*, a student-led art-tech installation. Inspired by London's music histories, high school students from the region conceptualized, designed, and constructed a series of furniture-instruments, transforming them into a playful, interactive living-room-style environment within the Museum.

Open to the public, the installation invited visitors to touch, play, and jam together, emphasizing creativity, collaboration, and access. The project was generously supported by Canada Life and the Cambia Development Foundation and stands as a powerful example of youth-driven creation and community-focused learning at Museum London.





Photographer: Farrell Tremblay

Venue Rentals

Venue rentals are a key source of earned revenue for the Museum, directly supporting exhibitions, programs, and education initiatives while activating our spaces for broad public use. By welcoming community groups, employers, education partners, and the public to host their own events, Museum serves as a dynamic hub for connection, creativity, and cultural exchange. Our rental program accommodates a wide range of uses—from symposia, conferences, team-building sessions, and retreats to private celebrations such as weddings, milestone events, and fundraisers—demonstrating the flexibility of our facilities and their strong value to the community.

In 2025, a major freight elevator replacement project began, introducing temporary operational constraints. Despite these challenges, the Museum continued to thrive as a vibrant cultural destination, bringing together community members, artists, and partner organizations to connect, share ideas, and create meaningful, memorable experiences.



Shop Museum London

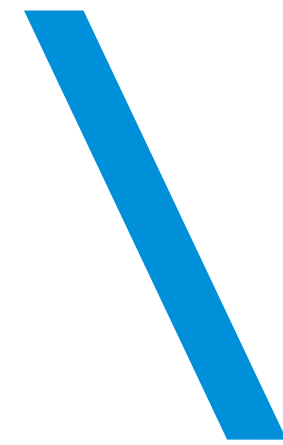
This year, we continued to grow and refine the Shop's offerings, highlighting an increasingly diverse inventory that champions local creatives and makers while directly supporting their livelihoods. All sales at Shop Museum London directly support Museum programming and the artists working in our community; in 2025 alone, Shop sales contributed to supporting 45 practicing artists and craftspeople.

The Shop continued to be revitalized through a refreshed product mix and stronger collaboration with local artists and artisans. By thoughtfully aligning exhibition catalogues, apparel, handcrafted items, and limited-edition ML merchandise—available exclusively at Shop Museum London—with current exhibitions, we created a more dynamic and memorable visitor experience for tourists and locals alike.

These efforts strengthened the connection between the Museum and the Shop while reinforcing our commitment to celebrating regional talent through artist pop-ups and featured displays.



Community Partnerships



At Museum London, we take pride in building meaningful community partnerships that strengthen our programs and enrich every visitor's experience. These collaborations are central to our work, helping us connect with diverse audiences,

spark new ideas, and nurture cultural relationships across the city. By working together, we create welcoming opportunities for dialogue, creativity, and shared discovery that reflect the energy, talent, and generosity of our community.

ADAC Canadian Art Hop
Anderson Windows & Doors
ARIDO, Fanshawe College
Art Conservation Services
ARTlab Gallery, Western University
Atlohsa (Solidarity Day)
Bealart
Beth Laking
Bijan's Art Studio
Black Students Association, Western University
BluHeron Interactive
Canadian Organization of Medical Physicists
CBC London
Changing Ways
City of London (CEAP)
Children's Health Foundation

Covent Garden Market
Doors Open London
Dundas Place
Earthfest
Elections Canada
Embassy Cultural House
Faculty of Arts & Humanities, Western University
Faculty of Education, Western University
Fashion & Lifestyle Society, Western University
Fanshawe College
Fine Art, Fanshawe College
Forest City Experimental Film Festival
Forest City Film Festival
Forest City Gallery
Good Sport

Goodwill Industries
Grand Theatre
Growing Chefs
Holy Cross Catholic Secondary School
Huron University College
Institute for Neuroscience, Western University
Institute for Earth & Space Research, Western University
Interactive Media Design, Fanshawe College
Interior Design, Fanshawe College
Ivey Academy
London Arts Council
London Bicycle Café
London Black Heritage Council
London Chamber of Commerce

London District Catholic School Board
London Environmental Network
London Health Science Centre
London Heritage Council
London Knights
London Modern Quilters Guild
London Public Library
London Society of Architects
LUSO
Magisterra Soloists
Michael Gibson Gallery
Middlesex Law Association
N'Amerind Friendship Centre
National Film Board
Ontario Culture Days
Pillar Non-Profit
Rotman Institute of Philosophy

Scholar's Choice
Schulich School of Medicine and Dentistry, Western University
Simple Reflections for Artists
Spoken Culture
SWOTC
TAP Center for Creativity
Thames Valley District School Board
Unity Project for Relief of Homelessness
WordsFest
Yaya's Kitchen

Volunteers

Museum London thrives because of a generous and committed community of volunteers who bring our mission to life. In 2025, volunteers donated more than 5,606 hours of their time, supporting programs, events, and day-to-day visitor experiences throughout the Museum. Their dedication played a key role in the success of our education initiatives, including summer camps, which were fully subscribed and sold out. We are sincerely thankful for the energy, care, and commitment our volunteers share. Museum London would not be what it is without them!



Volunteer Awards



The Museum London Emerging Volunteer Award:

Faith Hildreth

The Museum London's Emerging Volunteer Award acknowledges a volunteer who has demonstrated outstanding initiative in their role, possesses a cherished creative spark, and has made a beneficial contribution towards the organization's accomplishment of its mission.

Phyllis Cohen Volunteer Award:

Denise Love

The Phyllis Cohen Volunteer Award is presented to an individual who demonstrates innovation, creativity, leadership, and who has made a positive impact at Museum London by contributing to new projects and initiatives, revitalizing their current volunteer role by providing fresh perspectives, and being highly focused in their areas of interest.

Dr. Clare Bice Volunteer of the Year Award:

Enid Sigurjonsson

The Dr. Clare Bice Volunteer of the Year Award is presented to an individual who has made a significant contribution, commitment, and positive impact by getting to know Museum London, its visitors, and its staff in a variety of capacities, creating a well-rounded volunteer experience.

Thank you to our 2025 Volunteers!

Adalia Scott
Adrienne Abaya
Elham Afshari
Miar Alfarra
D'Arcy Allen
Dalia Almusawi
Gibbs Alobwede
Erin Anderson
Laura Annable
Ellen Atkinson
Bill Babichuk
Yelyzaveta Bakalova
Varsha Balaji
Randima Bandara
Kendra Barnett
Carolyn Bell Farrell
Brihana Bendle
Taylor Bentley
Barbara Bilyea
Chris Bowden
Carl Cadogan
Olivia Cahyono

Phoebe Catalan
Evelyn Chertkow
Nancy Chilvers
Jamie Clark
Angel Commins
Estelle Crocker
Arfa David
Gabie DeCastro
Rachel Deng
Olena Derkach
Helene Desruisseaux
Violet Dieroff
Olivia Doucette
Caleb Dow
Maridon Duncanson
Jane Eberhard
Deborah Eletu
Leighton Ellis
Mark Evans
Nate Fehrman
Michelle Feng

Zimo Feng
Elyse Fisher
Marzieh Forozantabar
Kathy Fox
Christian French
Amanda Froese
Ta Gao
Joscelyn Gardener
Natasha Gavriella
Wyn Geleynse
Evelyn Graham
Linda Groen
Edith Guzman
Anne Halls
Virginia Hannay
Faith Hildreth
Alexia Hlynianuk
Ron Holliday
Ivan Hu
Trevor Hunter
Sumeena Iqbal

Vidhi Joshi
Tina Kalopisis
Esther Kern
Sarah Khan
Daniel Kim
Joe Kizito
Jim Klingenberger
Shelley Kopp
Forest Kostyria
Roshni Kumari
Insun Kye
Tracy Langelaan
Kiara Lattanville
Jon R. Lavkulich
Sunmi Lee
Liya Liang
Paula Lombardi
Denise Love
Deb Maclean-Brine
Sheila McCallum
Beth McCarthy
Kathy Mclay

Alex McVety
Brian Meehan
Kasia Militech
Mia Min
Greg Morrow
Della Morton
Kira Muir-Polk
Gemmell Neilson
Kim Neudorf
Caley Nihill
Mary Niu
Ore Oluwaogunnaike
Sarah Padfield
Helen Pak
Sofia Palomeras Sanchez
David Pasquino
Rory Patten
Tom Peace
Jeni Peralta
Daniela Perez

Marianne Pflieger
Krista Pynn
Michelle Quintyn
Anna Quiquero
Brian Rack
Stephanie Radu
Jorge Rojas
Silvana Romero
Tatiana Russell
Juliana Saavedra
Jayant Sangwan
Lucas Savino
Anita Schipper
Nashra Shaik
Meenakshi Sharma
Liisa Sheldrick
Nadene Shokuri
Ninava Sibo
Enid Sigurjonsson
Jamie Smith
Emil Stoetzer
Malory Strom

Florentine Strzelczyk
John Sutton
Diana Tamblyn
Carmelita Tang
Natalia Thyssen
Nick Tountas
Ian Tripp
Sam Trosow
Coralia Tudor
Rita Turpie
Catherine Wilkins
Michael Wojtak
Teresa Xu
Victoria Yang
Carol Young-Ritchie
Jiaxin Zhou
Maria Zuloaga



2025 Volunteer Board and Committees

We extend our sincere thanks to our Board of Directors and Committees for their dedication, leadership, and continued support. Their thoughtful guidance and commitment play a vital role in shaping Museum London as a dynamic cultural institution, one that preserves, presents, and celebrates the region's art, history, and culture for the benefit of our entire community.

2025 Board Of Directors

Sarah Padfield, Chair
Michelle Quintyn, Vice-chair
Michael Wojtak, Treasurer
Shelley Kopp, Secretary
Laura Annable, Student Member
Nate Fehrman
Trevor Hunter
Tina Kalopisis
Tracy Langelaan
Jon Lavkulich
Florentine Strzelczyk
Diana Tamblyn
Carmelita Tang
Sam Trosow
Victoria Yang

2025 Committees of the Board

Governance Committee

Trevor Hunter, Chair
Sarah Padfield, Chair
Shelley Kopp
Michele Quintyn
Michael Wojtak
Victoria Yang

Policy Sub-Committee

Victoria Yang, Chair
Sahar El-Kotob
Jon Lavkulich
Florentine Strzelczyk
Taylor Bentley
Meenakshi Sharma

Property, Finance, and Risk Committee

Michael Wojtak, Chair
Trevor Hunter
Tina Kalopisis
Sarah Padfield
Nate Fehrman
Mark Evans
Jim Klingenberger

Strategic Capital Planning Sub-Committee

Nate Fehrman, Chair
Shelley Kopp
Jon Lavkulich

Volunteer Services Committee

Jon Lackulich, Chair
Diana Tamblyn, Chair
Laura Annable

Kathy Fox
Virginia Hannay
Shelley Kopp
Kira Muir-Polk
Jeni Peralta
Carmelita Tang

Acquisition Advisory Committees

Visual Art Collection Advisory Committee

Carolyn Bell Farrell
Chris Bowden
Jamie Clark
Joscelyn Gardner
Shelley Kopp
Lucas Savino
Ian Tripp

Material Culture Collection Advisory Committee

Carl Cadogan
Denise Love
Tom Peace
Stephanie Radu
Sam Trosow
Catherine Wilkins

UPwithART Advisory Committee

Alexia Hlynianuk
Ron Holliday
Paula Lombardi
Kim Neudorf
Anita Schipper
Liisa Sheldrick
Carmelita Tang



2025 Donors

With heartfelt thanks, Museum London recognizes everyone who donates to support our work. Your generosity helps us make the past present, preserve Canadian heritage, and remain a vibrant, welcoming, and accessible place for our community. Because of our

donors, we're able to support learning opportunities for students of all ages, champion emerging and established artists and curators, and share meaningful exhibitions and programs that connect people through art, history, and storytelling.

Chair's Circle (\$10,000+)

Cambia Development Foundation

Director's Circle (\$5,000-\$9,999)

Wilson and Judith Rodger Fund

Associate (\$2,500-\$4,999)

Beverley Ball

Peter & Catherine Clark Family Foundation

Elgin Contracting & Restoration Ltd.

Nancy Moore

Gerald Pedros

Ian B. Tripp in Memory of Flora Tripp

Benefactor (\$1,000-\$2,499)

Claire Anderson

Virginia Hannay

Danielle and Greg Kaiser

Arlene M Kennedy

Shelley and Greg Kopp

Jon R Lavkulich

Anthony and Betsy Little

Patrons of the London Bicycle Café

Paul Seed Fund

Brian Meehan and Kate Young

Michael & Mary Ott

Michelle Quintyn

Florentine Strzelczyk and Chris Kindratsky

Diana Tamblyn

Michael Wojtak

Patron (\$500-\$999)

Lynn & Brock

Armstrong

Karen & Eric Auzins Fund

Julie Bevan and Chad Oakenfold

Dr. Beryl Chernick

Estelle Crocker

Duncan Chassin de Kergommeaux Trust

Jamie Fenton and Mark Dencev

James and Eva Good

Shellie and Trevor Hunter

Silvia Langer

Cydna Mercer

Susan Moore

Sarah Padfield

Cec and Linda Rorabeck

Tecsar Engineering Inc.

Catherine Wilkins

Contributor (\$250-\$499)

Nate Fehrman

Jamelie Hassan

Lisa Henderson

Kate Keating

Patrick & Barbara Mahon

Stephen McClatchie

Greg Playford

Tatiana Russell

Brian Shilton

Solventum

Keith St Lawrence

Carmelita Tang

Abby Vincent

Faye and Rod Willis

Victoria Yang

Anonymous

Sustaining (\$100-\$249)

Anne Fraser Anderson and Family

Barbara Bain

Gregg Barrett

Carolyn Beacroft

Pam Brown and Bruce Compas

Stefan Chrapko

Diana Coates

Helene Desruisseaux

Devereux VanOstrand Fund

Claudia Ferguson

Helen Fielding

Beth and David Girvan

Mimi Goyer

Cathy Gregory

Rob Hartle

Hanny and Najet Hassan

Grant Hopcroft

Karen Koch

Jennie Kraehling

Aly and Neline Lalani

Sheilanne Lindsay

Amber Lloydlangston

London Symphonia

Debra Majer

Jennifer Martino

Debora McLachlin

Penny Moore

Andrea and Chris Nicholls

Marco Piani

Joanna Redden

Thelma and David Rosner

Clare Russell

Robert Schram

The Searles and Ffoulkes-Jones Families

Sell24hrs.com.inc

Leticia Tang

Sam Trosow

Carroll Willer

Anonymous

Friendship (up to \$99)

Laura Annable

Ann Arnold

Madeline Bassnett

Cassandra Getty

Ursula Hirländer

Louisa Howerow

Paul Jennery

Marianne Pflieger

Ruta Pocius

Dirka Prout

Rosemary Sloot

Richard R. Verrette and George E. Jolink

Beverley Ward

Jerry White

Anonymous

Corporate Sponsors

Canada Life

Downtown London

Elgin Contracting & Restoration Ltd.

Galerie Simon Blais

London Music Office

TD Bank Group

Lifetime Donors

In appreciation for those who have supported Museum London with lifetime gifts of \$25,000 or more

2cg Inc.

3M Canada Inc.

Claire Anderson

Bernard and Norton Wolf Family Foundation

Canada Life

CFPL Broadcasting Limited

City of London

Alan and Phyllis Cohen

C.S.A.L. Canadian Social Analysts Limited

Cultural Spaces Grant

Ellis-Don

Construction Limited

Estate of Alfred

McInroy Cuddy

Estate of Amelia Lucy

Ronalds Harris Little

Estate of Elsie Sarah Bruce

Estate of Joan Margaret Watt

Estate of Nora C. E. Dawson

Estate of Patricia Dorothy O'Brien

Friends of Eldon House

Good Foundation Inc.

Ron and Sue Holliday

Ivest Corporation

Richard and Beryl Ivey

Jackman Foundation

Labatt Ontario

Breweries

Miggsie Lawson

Lerners LLP

London Free Press

Brian Meehan and Kate Young

Eleanor Miller

S. Elizabeth Moore

Museum London Foundation

John and Margaret Nicholson

Rob and Mim O'Dowda

Allen and Elaine Philbrick

W.R. and Nancy Poole

Erica Shuttleworth

Laura Shuttleworth

Lorraine Shuttleworth

Sifton Family Foundation

Smart and Caring Community Fund

Don and Joan Smith

TD Bank Group

The Lawson Foundation

The London Community Foundation

The Richard and Beryl Ivey Fund

The Wilson and Judith Rodger Fund

Volunteer Committee of Museum London

Walter and Duncan Gordon Foundation



1

2

3

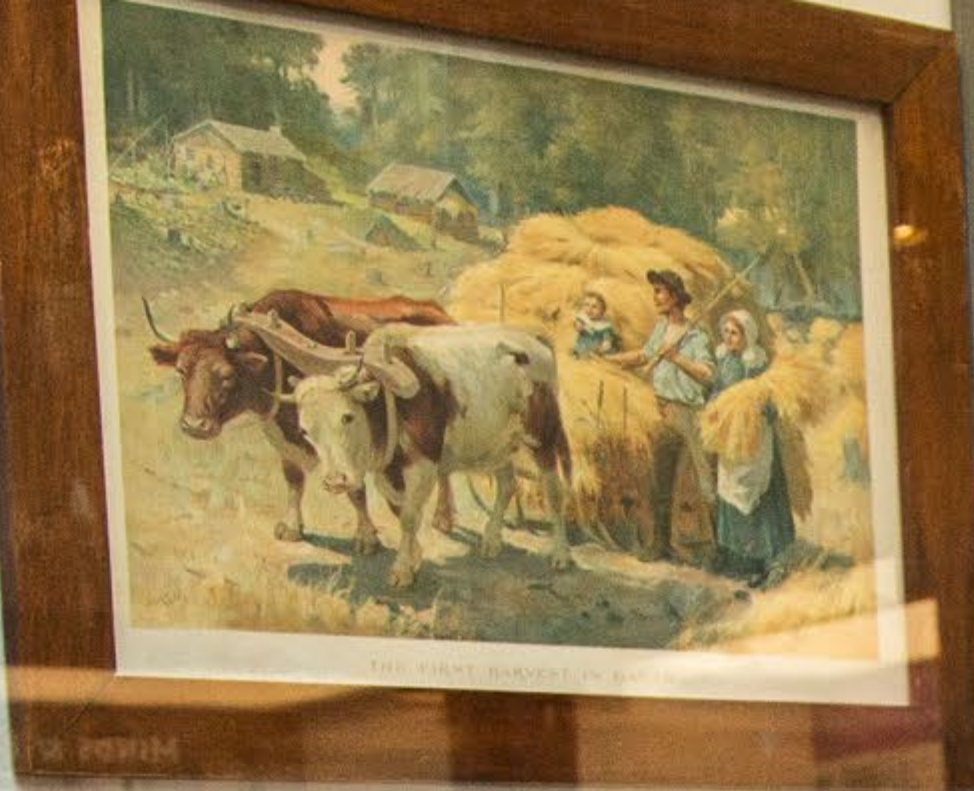
Wooden Box, 1834
John Stanfield made this box in 1834 to carry his belongings back to England from Australia. Two years earlier he and five other men, the "Tobacco Men," had been transported to Australia serving Great Britain's convict war effort. After parole, they went to the English port of Liverpool, where they met their parents, who had emigrated to Canada and settled in the London area.

Wooden Doll, 1834
Gift of Woodrow Wilson, 1915
The doll is named Fanny. Fourteen-year-old Ann Marshall (1820-1910) brought the toy with her from Ireland when she and her parents emigrated in 1834. Fanny helped Ann to her childhood in another country. What do you treasure from your past?



Here is Ann Marshall, Corbitt's many years later.
1824 or early 1820s.
Photograph, Mid-19th Century.
Courtesy, The London Public Library

Apothecary Balance, Mid-19th Century
Transfer from the London and Middlesex House of Commons, 1801
Mr. Alfred J. Jones (1811-1890) was a White engineer in Kentucky in 1833 and lived in London the same year. When Benjamin Drew visited Jones in the 1850s, Jones owned an apothecary shop in Bristol Street, London. Jones told Jones that he had worked in the city. He noted that his competitor, "there are several people who escaped slavery from the American border, it was too close enough to reach from the American border, it was too far enough away to avoid capture."



RECREAT



2025 Staff

We're grateful to everyone who contributes their time, talents, and expertise to Museum London. The care, creativity, and dedication of our team continue to shape the Museum as a welcoming and dynamic place for everyone in our community to engage with art, history and contemporary culture.

Noor Al-Keilani
Visitor Services/
Retail Services (PT)

Jerry Armer
Visitor Services/
Retail Services (PT)

Ross Bell
Chief Preparator

Aprile Bertacco
Programs Assistant,
Curatorial and Visitor
Services

Julie Bevan
Executive Director &
CEO

Steve Bittorf
Utilities/Preparator
(PT)

Phil Bram
Preparator (PT)

Jordan Brennan
Volunteer Services
and Assistant Events
Coordinator

Amanda Brown
Acting Volunteer
Services and
Assistant Events
Coordinator (PT)

Jess Butler
Supervisor of Retail
Services

Giulia Commisso
Summer Camp
Coordinator

Janette Cousins
Ewan
Art Registrar

Laura Curiale
Executive Assistant

Devon Elliott
Curator of Education

Jamie Fenton
Head of Operations
& Visitor Experience

Cassandra Getty
Curator of Art

Jamal Ghouzlan
Preparator (PT)

Dan Hamilton
Utilities/Preparator
(PT)

Krista Hamlin
Registrar

Sherry Han
Summer Camp
Counsellor

Ahmed Ismail
Marketing &
Communications
Specialist

Kadeem Jenkins
Utilities/Preparator
(PT)

Andrew Kear
Head of Programs

Chuck Kitt
Utilities

Brian Lambert
Preparator (PT)

**Amber
Lloydlangston**
Curator of History
and Contemporary
Culture

Kerry Logan
Supervisor of Retail
Services

Celina Marlatt
Visitor Services/
Retail Services (PT)

AJ Marsh
Utilities/Preparator
(PT)

Lisa Mc Dougall
Events Coordinator

Janet McCrea
Visitor Services/
Retail Services (PT)

Zahra McDoom
TD Curator of
Collections

Elizabeth McGinley
Volunteer Services
and Assistant Events
Coordinator

Melanie McIlmoyle
Front of House
Coordinator

Kattina Michelle
Visitor Services/
Retail Services (PT)

Sarah Munro
Curator of
Engagement &
Outreach

Kristen Odegaard
Design Specialist

Bob Osthoff
Utilities (PT)

Rachel Riddell
Summer Camp
Counsellor

Kenna Robinson
Summer Interpretive
Coordinator (PT)

Tania Rodriguez
Visitor Services/
Retail Services (PT)

Andy Romanchik
Visitor Services/
Retail Services (PT)

Alcina Stoetzer
Acting Front of
House Coordinator

**Mardi Tiesma
Stewart**
Accounting Clerk

Kaylee Temple
Director of Finance

Abby Vincent
Head of Marketing &
Development

Billy Bert Young
Preparator (PT)

Kevin Zacher
History Registrar

Yasmine Zerdoumi
Visitor Services/
Retail Services (PT)

Growing and Activating Our Collection



Art Acquisitions

Jude Abu Zaineh (Canadian, b. 1990)

FORMations, 2022

single/two-channel digital video, 5:16 mins

Purchase, John H. and Elizabeth Moore

Acquisition Fund

Mark Stebbins (Canadian, b. 1979)

Supersampler, 2024

acrylic on burlap on wood panel

Purchase, John H. and Elizabeth Moore

Acquisition Fund

Gift of Dr. Helen Peters on behalf of The White and Story Families

Edward Middleton Manigault (Canadian, 1887–1922)

Still Life with Flowers, 1921–1922

oil on canvas

Edward Middleton Manigault (Canadian, 1887–1922)

Boat House Canoes, 1922

oil on canvas

Edward Middleton Manigault (Canadian, 1887–1922)

Untitled (Landscape with Trees), 1922

oil on canvas

Gift of the Estate of Patricia Deadman

Patricia Deadman (Canadian, 1961 – 2024)

Cuento de Dos Jardins, 2009

suit of 24 digital photographs on disband mounting

Patricia Deadman (Canadian, 1961 – 2024)

Warm, Soft, Dappled Floor, 2000

black and white photo mural

Gift of Stephen McClatchie & Peter Groom

David Garneau (Canadian, Métis, b. 1962)

Red and White Composition, 2002–2003

oil on canvas

David Garneau (Canadian, Métis, b. 1962)

20th Century Art, 2002–2003

oil on canvas

David Garneau (Canadian, Métis, b. 1962)

Dialectic Materialism, 2002–2003

oil on canvas

Gift of Christine McEwan and Gillian C.M. Ashton

John Ashton (Canadian, b. England, 1787–1876)

Return of the Prodigal Son, Circa 1871

oil on board

John Ashton (Canadian, b. England, 1787 – 1876)

Rebecca at the Well, Circa 1871

oil on board

John Ashton (Canadian, b. England, 1787–1876)

Daniel in the Lion's Den, Circa 1871

Art Loans

Joyce Wieland: Heart On

Montreal Museum of Fine Arts and Art Gallery of Ontario

On display from February 3 – May 4, 2025;
and June 21, 2025 – January 4, 2026

1 Work:

Joyce Wieland (Canadian, 1931–1998)

Design for poster for “The Far Shore”, 1976

coloured pencil on paper and illustration board
74.1 x 54 cm

Collection of Museum London, Gift of Ralph and Rosemary Bull, London, Ontario, 1985

The First Homosexuals

Wrightwood 659 / Alphawood Exhibitions
(Chicago, IL, USA)

On display from May 1 – August 1, 2025

1 Work:

Florence Carlyle (Canadian, 1864–1923)

The White Flower, circa 1895

oil on canvas

108 x 61 cm

Collection of Museum London, Gift of Dr. Charles Fisher, London, Ontario, 1990, and conserved by the Canadian Conservation Institute of the Department of Canadian Heritage



Publications

Mark Stebbins: Supersampler

Text: Simon Blais, Cassandra Getty.

Translation: Martin Blais

92 pages

ISBN: 9781988672137

History Acquisitions

Gift of the Adeland Family

Stuffed Werewolf Mascot

London Werewolves Ball Cap

London Werewolves Mug (2)

London Werewolves Baseball Cards, Unopened

Signed Baseball

Frontier League Baseball

London Werewolves Fan Sign (2)

Tickets, London Monarchs (4)

Gift of Judith and Wilson Rodger

DCCT T-Shirt

London Children's Festival T-Shirt, 1990s\

LRAHM Café T-Shirt, 1985-90

Greg Curnoe Life & Stuff T-Shirt, 2001

Vogue Couturier Dress and coat, 1967-68

Bud Gowan Formal Wear Tuxedo, 1970s (with silk scarf and bow tie)

Andrew Douglas Clothier Raincoat, c. 1980s

David Findlay Women's Suit, late 1990s-early 2000s

Green Coat, 1960s

Man's Suit, Keith Moore Studios, 1980s

Expo '67 Ephemera:

a) Passports (4), Expo '67

b) Map, Expo '67

c) Special Passport, Expo '67 Inauguration

d) Program, Opening, Man and His World

e) Instructions for Opening of Man and His World

f) Tickets (2), Man and His World Inauguration

g) Programs (plays, ballets, operas), 8

h) Pin

Gift of Beverley Corlett

Duffle Cloth Parka, Women's Duffle Socks

Gift of Carl Cadogan, London, Ontario, on behalf of The London Black Heritage Council

Paul Lewis Photograph, 1960

Gift of Ms. Georgia Sifton

Two photographs of Londoner Georgia Sifton, 1973

Vogue Pattern for suit, 1973

Singer scissors and case, 1973

Suit and Blouse, 1973

Consent to participate, 1973

Certificate (4), 1973

Gift of Louise Karch

Pink Garber's Bridal wedding gown, circa 1980

Pink mule style shoes, 2004

Pink netted toy wings, 2004

Shiny metal tiara, 2004

White elbow length gloves, 2004

Pink net gloves, 2004

Gift of Mrs. Nancy Poole

Paul Peel Sweatshirt, circa 1986

Clark McDougall Sweatshirt, 1987

Jack Chambers Sweatshirt, 1987

Gift of Ms. Christine McEwan and Gillian C.M Ashton

Portrait, John Ashton

Portrait, Grace Jewell Asthon

Painting, Eddystone Lighthouse

Portrait, John Wesley Nash

Gift of Martha and Rob Nelson

Ron Nelson's Fairchild F-56 aerial camera

Suitcase containing camera mount and manual

Truck containing camera equipment and accessories



Gift of Gwen Zezulka

Floral Sundress, Stuart Kent Harper

Grey, Blue, and White Short-Sleeved Suit, Stuart Kent Harper

Long-Sleeved Brown Suit with Velvet Collar, Stuart Kent Harper

Long-Sleeved, Brown Suit with Three Quarter Length Sleeves, Stuart Kent Harper

Long-Sleeved Black Skirt Suit, Stuart Kent Harper

Gray Woman's Topcoat, Stuart Kent Harper

Black Blouse with Floral Collar, Stuart Kent Harper

Floral Shawl/Sash, Stuart Kent Harper

Sundress and Jacket, Stuart Kent Harper

Gift of Leslee White-Eye

"Water is Sacred/No Pipelines" cloth banner, 2016

Gift of Rolan Fahd

Ensemble (Shirt/jacket/tie/buttons), circa 2025

Gift of Mayson Fulk

Proud Union Queer T-shirt, 2021

History Loans

Permanent Exhibition (Section 1883 to 1913)

The Royal Canadian Regiment Museum

On display from January 2020 to January 2030

2 Objects:

Military Jacket, circa 1883–1894

Military Vest, circa 1883–1894

Collection of Museum London, Gift of Mrs. Stanley Cushman, 1976

Permanent Exhibition (Guy Lombardo)

London Music Hall of Fame

On display from September 24, 2025 to March 24, 2026

2 Objects:

Award, Guy Lombardo 1978 Canadian Music Hall of Fame, 1978

London Street Sign: "Lombardo Ave." n.d.

Collection of Museum London, 2015

Temporary Exhibition (Kaleidoscope Exhibition)

The Museum

On display from April 11, 2025 to January 15, 2027

2 Objects:

Octascope with Box, 1976

Collection of Museum London, 1977

Multi-Coloured Kaleidoscope, circa 1930–1950

Collection of Museum London. Gift of Barbara A Campbell, London, 1995

Temporary Exhibition (*In the Chair: Haircuts and Toothaches*)

Museum Strathroy Caradoc

On display from October 4, 2025 to January 30, 2026

2 Objects:

Turbinator Drylite Salon Dryer Chair, circa 1950s

Collection of Museum London, 2012

Black Padded Dental Examination Chair, circa 1920–1929

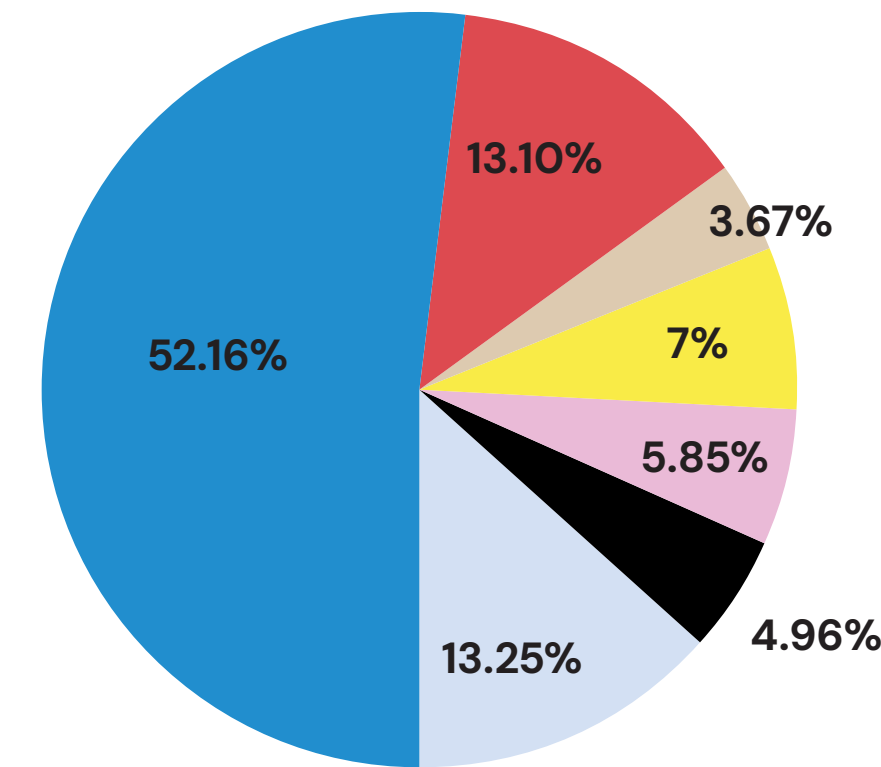
Gift of the London Health Sciences Centre, London, Ontario, 2004

2025 Operating Revenues & Expenditures

Museum London received core support from the City of London in the amount of \$2,172,416. In addition, \$545,443 was received from the Government of Canada through various agencies as well as the Ontario Government. This funding was supplemented by the support of our volunteers and staff in fundraising, by personal and corporate donations, exhibition and program sponsorship, event rentals, and support from our endowment fund.

In addition to the Operating Fund, the Museum has a Capital Fund and an Investment Fund. The Capital Fund includes land, building, furniture, and equipment, and has a net book value of \$5,686,023 as of December 31, 2025. The total 2025 capital additions were \$486,662 which were funded by the Museum and City of London. The Investment Fund has a balance of \$9,523,213 as of December 31, 2025 of which \$5,190,927 is reserved as an operating endowment and \$4,332,286 is restricted funds set aside for specific purposes. A complete set of statements is available upon request.

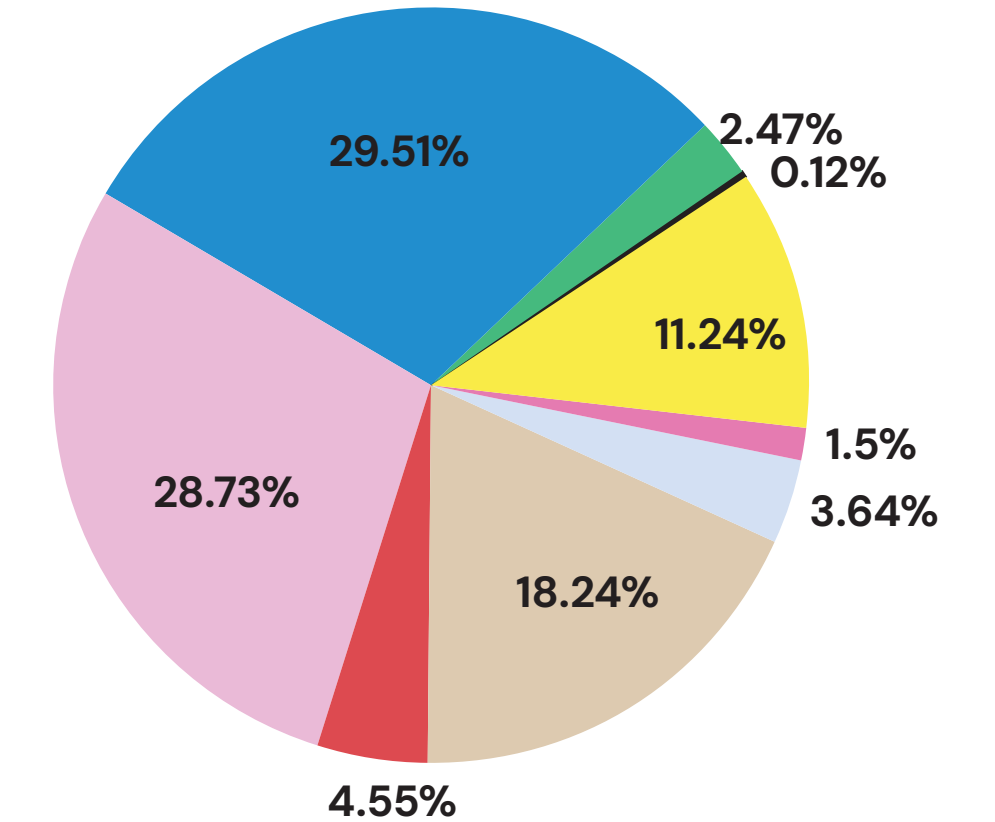
Revenues
\$4,164,780



City of London	2,172,416	52.16%
Federal and Provincial Grants	545,443	13.10%
Donations and Fundraising	152,891	3.67%
Exhibition Sponsorship and Program Revenues	291,722	7.00%
Catering and Rental	243,759	5.85%
Other Earned Revenue	206,734	4.96%
Transfer from Reserve Funds	551,815	13.25%

Total Revenues \$4,164,780

Expenditures
\$4,164,780



Operations	1,196,576	28.73%
General and Administration	1,229,054	29.51%
Catering and Rentals	102,729	2.47%
Acquisitions	5,200	0.12%
Exhibitions	468,079	11.24%
Public Programs	151,462	3.64%
Curatorial and Collections Management	759,759	18.24%
Promotion and Fundraising	189,431	4.55%
Transfers to Capital fund	62,490	1.50%

Total Expenditures \$4,164,780

With humility and respect we acknowledge that Museum London sits at the forks of the Dëshkan Ziibi on the traditional lands of the Anishinaabek, Haudenosaunee, Lūnaapéewak, and Attawandaron.

Our Mission

Museum London mobilizes art and history to build community and co-create an inspired future.

Our Vision

A leading art and history resource that connects communities, inspires change, challenges ways of thinking, and ignites creativity towards a more just world.

Thank you to our generous supporters:



Images by Angela Antonopoulos unless otherwise noted.

Stay connected

Share your visit with us!

Tag @MuseumLondon or use #MuseumLdn



421 Ridout Street North
London, Ontario, Canada N6A 5H4
519-661-0333
museumlondon.ca

Museum London