

ANNUAL REPORT 2018

N

MUSEUM
LONDON

A REPORT FROM THE BOARD OF DIRECTORS

2018 saw Museum London celebrate its 38th year at the Forks of the Thames, and the major highlight of the year was the opening of our *Centre at the Forks* initiative at the end of September.

In its first seven months the *Centre at the Forks* has lived up to the hopes that we had for it becoming a space that will engage Londoners and visitors alike by delivering innovation in Museum design and programming while contributing to the revitalization of the Forks of the Thames. The Centre showcases an expansive, panoramic two-story window and an outdoor terrace, linking Museum London and the Forks of the Thames in a dynamic new relationship at the historic heart of London. The community has embraced the space by holding a wide variety of events and programs in the Centre.

2018 was also another strong year for providing our community with an outstanding array of art and history exhibitions. Visual art exhibition highlights included *Embodiment* during the spring cycle, *BGL: Spectacle + Problems* and Kelly Jazvac's *Lamina Stamina* during the summer months and, *Words and Pictures* and *Bev Pike: Grottesque* in the fall. Our historical exhibitions featured *Women's Lives in Canada: A History, 1875–2000*, *Guilty Pleasures and Bad Habits: Alcohol, Caffeine, Tobacco, and...*, *Ting: The Life and Work of Merle Tingley*, and the award-winning, *Voices of Chief's Point*.

All these exhibitions were complemented by an expansive education program. Most notably we moved the Clare Bice Studio space from the temporary location in the Lawson Gallery into its bright new home in the *Centre at the Forks* in September. The new studio is accessible by elevator and fully equipped for our family drop-ins, children's camps, youth council, adult art classes, and workshops.

We revised our summer walks to include a participatory nature writing tour of the Thames, broadened our Culture Club talks to address local issues including a discussion of addiction, and piloted a sustainable art workshop for Earth Hour. In seeking to find ways of making art practice more accessible to the public we offered sold-out card-making workshops and even offered a chocolate tasting event to link local business with exhibition themes in *Guilty Pleasures*. Our children's summer art camps continue to expand in registration and sell out as a staple program at the Museum.

Popular community events continued to run throughout the year including Museum-wide free activities on Family Day, Canada Day, and during Doors Open. Innovative community collaborations at the Museum included hosting the Inclusive Arts London Festival which develop opportunities for deaf, disabled, and isolated artists, bringing in Ojibway storyteller Aaron Hill, and premiering the London Arts Council performance of "Invitation to Korean Mountain" to launch the Centre at the Forks.

We also reached into the community through our partnership in the SATELLITE Gallery, a collaborative exhibition space run by Museum London, Western University and Fanshawe College, and we continued with year four of our Culture Club 55+ seniors' program to a very positive response.

2018 was a time of excitement for our education programs, as we planned for and utilized the new Centre to support the success of current programs, strategized new directions, and dreamed about new possibilities for future programs. A wide variety of education programming was provided both at the Museum and out in the community.

For the 16th year, London Life generously supported the Making Art Creating Community Program. Métis artist-educator, Brenda Collins, integrated her Indigenous knowledge and teachings into a series of art-making workshops for underserved students. The impact of the MACC Program on students was evident in the feedback received. According to one teacher, "a student who made no effort in art before was enjoying success; a student who had anxiety mentioned how comfortable she felt at the museum," and yet another student said that "she would like to work at the museum when she was older."

Almost 1,000 students participated in the 2018 London Life Art Outreach Program during the months of April and May. Museum London's tour guides visited 16 different schools and provided programming to 45 classes. Teachers were very pleased with the Art Outreach Program. A kindergarten teacher at Knollwood Park Public School wrote, "Your tour guides came to deliver a wonderful program to my kindergarten class this morning. They were excellent teachers, and we had such a great time creating our works of art! It was well-thought out, time-appropriate, age-appropriate, doable for the diverse needs of the students, and highly engaging. The whole experience was lovely."

We continued to add to our art collection in 2018 with the acquisition of works by BGL and Sky Glabush. We also focused on strengthening our representation of Indigenous artists with the purchase of works by Shuvinai Ashoona. Our material culture collection was greatly enhanced by hundreds of objects given by dozens of generous donors in the community.

The Museum is very fortunate to receive significant funding annually from the City of London, the Canada Council for the Arts, and the Ontario Arts Council, but our ability to provide engaging experiences is bolstered by the financial support we receive from the community.

Museum London values the great generosity of its donors who responded very positively throughout the past year. These individuals and organizations make it possible for us to preserve and tell the story of London and Londoners through art, artifacts, and programming.

And we sincerely thank all our active and committed volunteers—our capital campaign volunteers, tour guides, board and committee members, gift shop volunteers, and many others—who have done exceptional work to support the Museum this past year and throughout the it's history.

Volunteers are the heart of the Museum and in 2018 we saw a massive increase in their support. Our 189 volunteers contributed 11,190 hours of service and we thank each of these volunteers for making the Museum a better place.

2018 was a watershed year for Museum London and we look forward to building on these accomplishments in 2019.

Brian Meehan
Executive Director

Debra Majer Fraser
Board Chair

HISTORICAL

Women's Lives in Canada:

A History, 1875-2000

January 20 to May 6, 2018

Guilty Pleasures and Bad Habits: Alcohol, Caffeine, Tobacco, and ...

January 27 to April 29, 2018

Voices of Chief's Point

May 12 to September 16, 2018

Heavy Metal

July 12, 2018 to April 23, 2019

Ting: The Life and Work of Merle Tingley

September 22, 2018 to January 27, 2019

ART

Embodiment

December 23, 2017 to April 1, 2018

BGL:

Spectacle + Problems

April 28 to August 26, 2018

Kelly Jazvac:

Lamina Stamina

May 5 to September 30, 2018

Look!

An Opera in 9 Paintings

May 28 to June 28, 2018

Words and Pictures: Cartoonists of Southwestern Ontario

September 15 to January 13, 2019

Taking the Long View: The Museum London Art Collection, from its Beginning to Today

December 1, 2018 – ongoing

PanCanada:

Artist Journeys

December 8, 2018 to April 14, 2019

BORROWED

Bev Pike: Grottesque

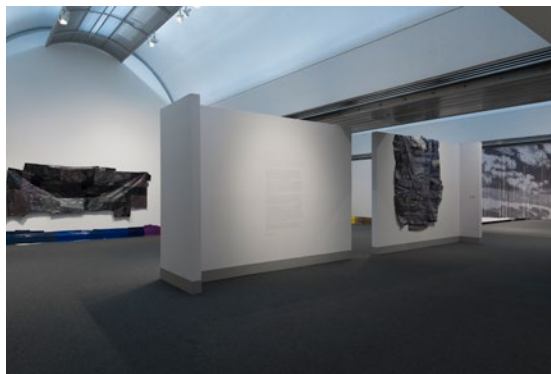
September 15 to December 9, 2018

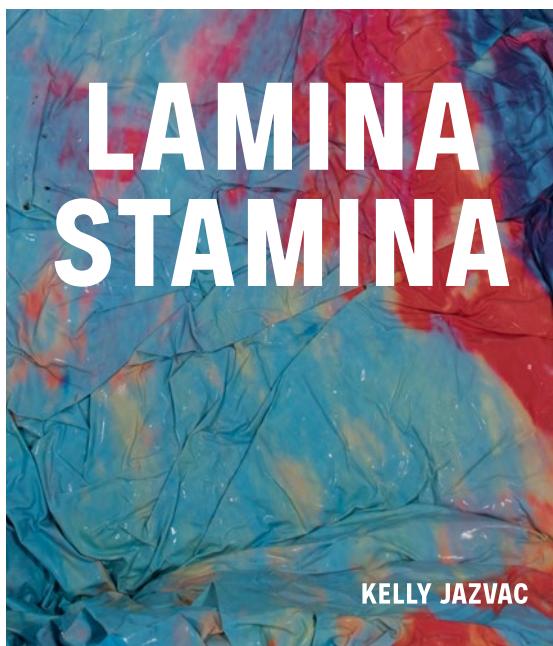
Organized and circulated by the Dunlop Art Gallery, Regina Public Gallery

TOURING

Robert Fones: Signs | Forms | Narratives

Art Museum, University of Toronto, May 16 to July 21, 2018





Lamina Stamina

Text: Cassandra Getty, Isa Tousignant

38 pages

ISBN: 978-1-988672-05-2

\$25.00



ART PURCHASES

Shuinai Ashoona
Untitled, Co-op, 2009
 coloured pencil and ink
 on paper
 Purchase, John H.
 and Elizabeth Moore
 Acquisition Fund, 2018

Shuinai Ashoona
Untitled, 2007
 coloured pencil and ink
 on paper
 Purchase, John H.
 and Elizabeth Moore
 Acquisition Fund, 2018

Shuinai Ashoona
**Heads Emerge from
 the Rocks**, 2015
 coloured pencil and ink
 on paper
 Purchase, John H.
 and Elizabeth Moore
 Acquisition Fund, 2018

Sky Glabush
Shadows, 2018
 acrylic on cotton and
 wool
 Purchase, John H.
 and Elizabeth Moore
 Acquisition Fund, 2018

**BGL (Jasmin Bilodeau,
 Sébastien Giguère,
 Nicolas Laverdière)**
Highway Sign, 2018
 painted bamboo
 curtains
 Purchase, John H.
 and Elizabeth Moore
 Acquisition Fund, 2018

ART GIFTS

Robert Bozak
Big Dipper, 1976
 watercolour on paper
 mounted on mat board
 Gift of Sara Steers,
 London, Ontario, 2018

Fernand Leduc
Blanc pression, 1957
 oil on canvas
 Gift of Gordon and
 Carol Schacter,
 London, Ontario, 2018

Jean-Paul Mousseau
Untitled, 1946
 oil on canvas
 Gift of Gordon and
 Carol Schacter,
 London, Ontario, 2018

Jeff Willmore
Gaspé, 2011
 acrylic on plywood
 Gift of the artist,
 London, Ontario, 2018

Tony Urquhart
Greg Curnoe's Shoes,
 1964
 ink on paper
 Gift of Robert Reid,
 Waterloo, Ontario,
 2018

Kelly Wallace
Greenburgs, 2008
 graphite on paper
 Gift of the Estate
 of Benjamin Portis,
 London, Ontario, 2018

Olia Mishchenko
Untitled, 2005
 pen and ink on paper
 Gift of the Estate
 of Benjamin Portis,
 London, Ontario, 2018

Doug Kirton
Cascade Requiem, 1987
 oil and alkyd on lauan
 mahogany door panels
 Gift of the artist,
 Kitchener, Ontario,
 2018

Patrick Mahon
Baker Lake, House
 series, c. 2010
 suite of 24 prints,
 silkscreen on Plexiglas
 Gift of the artist,
 London, Ontario, 2018

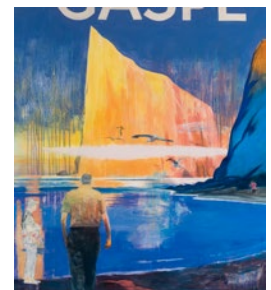
Patrick Howlett
**An interplay of
 something**, 2008
 egg tempera on panel
 Gift of the Estate
 of Benjamin Portis,
 London, Ontario, 2018

Doris McCarthy
**Boasts on the Devon
 Coast/Haliburton
 Stream**, 1952/c. 1930s
 oil on masonite
 Gift of Paul van der
 Werf and Nadia
 Joseph, London,
 Ontario, 2018

Doris McCarthy
**Stormy Sky/Fishermen
 at the Pier**, undated
 oil on board
 Gift of Paul van der
 Werf and Nadia
 Joseph, London,
 Ontario, 2018

Doris McCarthy
**The Covered Bridge at
 "Corner of the Beach",
 PQ**, 1946
 oil on board
 Gift of Paul van der
 Werf and Nadia
 Joseph, London,
 Ontario, 2018

Doris McCarthy
**Old Man Mountain
 from the Golfcourse**,
 1992
 oil on panel
 Gift of Paul van der
 Werf and Nadia
 Joseph, London,
 Ontario, 2018



Doris McCarthy
Mountains West of
Coleman, 1995

oil on board
Gift of Paul van der
Werf and Nadia
Joseph, London,
Ontario, 2018

Frederic Marlett Bell-
Smith

BC Mountains, undated
oil on board
Gift of Paul van der
Werf and Nadia
Joseph, London,
Ontario, 2018

Paul Peel
Untitled (Étapes),
1886

oil on canvas mounted
on artist's board
Bequest of Muriel Elsie
Buller, Victoria, British
Columbia, 2018

Guido Molinari
Orange, Bleu, Vert
(Green), 1969

oil on canvas
Gift of Rob and Sandra
May, London, Ontario,
2018



Paddy Gunn O'Brien
The Chrysanthemums
at 1603, 1971

oil on canvas
Bequest of the Estate
of Daphne Isard,
London, Ontario, 2018

Paddy Gunn O'Brien
Fragment of Lake
Huron, 1993

oil on canvas
Bequest of the Estate
of Daphne Isard,
London, Ontario, 2018

Paddy Gunn O'Brien
Untitled, undated
oil on canvas
Bequest of the Estate
of Daphne Isard,
London, Ontario, 2018

Paddy Gunn O'Brien
Looking at Chudleigh,
Devon, 2000
oil on canvas
Bequest of the Estate
of Daphne Isard,
London, Ontario, 2018



Paddy Gunn O'Brien
Pool in Sunlight #1,
1995
oil on paper
Bequest of the Estate
of Daphne Isard,
London, Ontario, 2018

Paddy Gunn O'Brien
Pool at Dusk #1, 1995
oil on paper
Bequest of the Estate
of Daphne Isard,
London, Ontario, 2018

Margot Ariss
Lerida, 1973
etching on paper
Bequest of the Estate
of Daphne Isard,
London, Ontario, 2018

kerry ferris
Killarney, 1978
watercolour on paper
Bequest of the Estate
of Daphne Isard,
London, Ontario, 2018

Gilbert Moll
Constellation for Mr.
Magritte, 1978-79
lacquer spray and
enamel on paper
Bequest of the Estate
of Daphne Isard,
London, Ontario, 2018

Gilbert Moll
Goldfish Kite, 1980
watercolour on paper
Bequest of the Estate
of Daphne Isard,
London, Ontario, 2018

Bernice Vincent
Ladder, 1979
graphite on paper
Bequest of the Estate
of Daphne Isard,
London, Ontario, 2018

John McEwen
Maquette for Teko-with
Broke Base, c. 1980
bronze
Gift of Karen
Mulhallen, Toronto,
Ontario, 2018

ART TRANSFERS

Harold Klunder
Greenpeace III, 1976
watercolour, wax and
gouache on paper
John Hansler
Collection transfer
from McMaster
Museum of Art,
Hamilton, Ontario,
2018

Harold Klunder
Woomera, 1979
eight-colour
lithography on Arches
buff paper
John Hansler
Collection transfer
from McMaster
Museum of Art,
Hamilton, Ontario,
2018

Harold Klunder
Navaho, 1976
watercolour and
gouache on paper
John Hansler
Collection transfer
from McMaster
Museum of Art,
Hamilton, Ontario,
2018

Lionel LeMoine
FitzGerald
Abstract, c. 1950s
pencil on paper
John Hansler
Collection transfer
from McMaster
Museum of Art,
Hamilton, Ontario,
2018



GIFTS

**GIFT OF ELAINE
C. HERRMANN,
MONTEREY,
CALIFORNIA, USA,
2018; IN MEMORY
OF KATHLEEN
MCDONALD
HERRMANN**

Residence Rules for
Student Nurses,
Victoria Hospital,
1930s
Rugby Dance, 1934
Dance Card
University of Western
Ontario Dance Card,
1935

**GIFT OF MERCY
NLEYE-NCUBE,
LONDON, ONTARIO,
2018**

"African, Caribbean &
Black Canadian HIV/
AIDS Awareness Day,
February 7" Scarf,
2018

**GIFT OF ELEANORE
REYNOLDS, LONDON,
ONTARIO, 2018**

Bunny Bundle Award
Certificate, 1975

**GIFT OF JONATHAN
VANCE, LONDON,
ONTARIO, 2018**

Webster Air
Equipment Paint
Sprayer
Boy Scouts of Canada,
London District
Council: 1965 Annual
Meeting, 1965
Boy Scouts of Canada,
London District
Council: Reporting
Progress, 1965

Boy Scouts of Canada,
London District
Council: London
District Council Badge
Heraldry, 1965
Ivanhoe Curling Club
Patch
Military Band, London,
Ontario Postcard, 1907
Capitol Records
Albums Leaflet, 1951
(12) HRH Edward
Prince of Wales'
visit to London
Photograph, 1919
Nokia LX12 Phone, Bag
and Accessories, 1992
Masuret & Co. Mail in
Order, 1883
3M Company Postcard
Robert Holmes Books,
Stationery Bookmark
Wendell Holmes
Books, Stationery
Bookmark
Matchbooks:
Howden's Electrical
Supply
Knotty e Inn
Beef Baron Steak
House
Gino's Bus Lines
The London Fishery
and Oyster House
National Traveller
Hotel
Holiday Inn
André's Steak House
South Winds Sand and
Gravel
McCormick's Salted
Crackers
A&N Electronics
Four Seasons Hotel
Latin Quarter
Re-Elect Gordon
Walker, M.P.P. PC
Party
The Paddock
Hook's



Huron House
Restaurant & Tavern
London Car Radio
Sales & Service
Matthews Homes
The Grosvenor Club
The Baron's
Room Tavern Live
Entertainment
Seven Dwarfs Inn
Prevost Armoury
Officers' Mess
University Grill
Restaurant
The Lounge
Mini Car Parts and
Accessories
Oakridge Secondary
presents "Carnival"
The Red Lion Inn
Co-op Credit Union
Royal Alex Hotel
Murphy Tabacco
Limited
Hotel London
Melody Restaurant and
Tavern
Mr. Pizza/Mugs
Sunningdale Country
Club
Paul's Variety

**GIFT OF JUDITH AND
WILSON RODGER,
LONDON, ONTARIO,
2018**

"What A Red Cross
Branch Can Do for
Your Town" Booklet
Greeting Cards:
"An Anniversary
Admission to My Wife"
"For Your Anniversary"
"Our Shower Gift to
You/It Isn't Raining
Cats and Dogs..."
"Sweet Adaline Makes
Up her Mind..."
Congratulations
on 50th Wedding
Anniversary Letter
"A Gift from All of
Us..."
6 Cup Baking/Serving
Corning Ware Dish
7 Cup Baking/Serving
Corning Ware Dish
Corning Ware Stand
for Baking/Serving
Dish
Corning Ware Handle

GIFT OF THOMAS BEAN, LONDON, ONTARIO, 2018

Victoria Park Fountain Painting

GIFT OF SUSAN BIDINOSTI, LONDON, ONTARIO, 2018

Strong & Rosser Pharmacists Bottle

GIFT OF GEORGE L. BLAKE, KEMPTVILLE, ONTARIO, 2018

C.E. Marley Outdoor Advertising Drawing

GIFT OF ST. CATHARINE'S MUSEUM, ST. CATHARINE'S, ONTARIO, 2018

London Lords Football Club Program, 1969
London Lords Football Club Program, 1971

GIFT OF WAYNE CHERRY, LONDON, ONTARIO, 2018

Tricycle, c. 1880
Nordmende High Fidelity "Carmen C" Shortwave Radio, c. 1960

GIFT OF CAROL CHRISTIE, LONDON, ONTARIO, 2018

Atari Computer 800XL
Atari 1050 Dual Density Disk Drive, 1983
Atari 1027 Letter Quality Printer, 1983
Texas Instruments Home Computer, 99/4A, 1982

Gemstik Joystick, 1984
WICO Command Control Joystick, 1982
Atari CXL4011, Star Raiders, 1981
Atari CXL4024, Galaxian, 1982
Atari Writer Word Processor RX8036 Video Game, 1988
Atari Writer Microsoft Basic II, Programming Language, RX8035 Video Game, 1982
Activision Keystone Kapers Computer Game, 1983
Command Module: TI Invaders Computer Game, 1981
Command Module: Munch Man Computer Game, 1981
Samsung: MS DOS Version 3.2, 1 of 2 Diskette
Samsung: MS DOS Version 3.2, 1 of 2, Diagnostics Diskette VISICALC, Atari 800 32K Diskette
IBM DOS, 6139265 Diskette, 1986
IBM DOS, 6139269: Supplemental Programs, 1986
Archon: The Light and The Dark, 1983
Archon II: Adept, 1983
Murder on The Zinderneuf, 1983
Mike Edwards' Realm of Impossibility, 1984
Will Harvey's Music Construction Set, 1983

GIFT OF WILLIAM CLARKE, LONDON, ONTARIO, 2018

London Rolling Mills: John William Norris Photograph
"2" Metal Bucket Photograph
Molten Metal Pouring Photograph
Men Working with Molten Metal Photograph
Man with Tongs Photograph
Men Using Table Saws Photograph
Women Polishing Metal Photograph
Laboratory Photograph
Furnace Photograph

GIFT OF MR. STEPHEN GRIMES, 2018

Stirton & Dyer Miniature Axe, Advertising Item
Linoleum Floor Sample
Iroquois Hotel Volvelle
Shirriff's Extracts Bottle
Barkwell's Sure Corn Cure Bottle
Joker No. 5 Mouse Trap
"Great Canadian Pocket Diary, 1907", 1907

GIFT OF GRANT MALTMAN, LONDON, ONTARIO, 2018

Boughners Limited Clothes Hanger
Bud Gowan Clothes Hanger
Simpson's London Clothes Hanger



GIFT OF THE TINGLEY FAMILY, 2018

Luke Worm Sculpture
(2) Cheese Cutter Hat
Parker Super Briar Bark Pipe
(2) Dr. Grabow Duke Pipe
"64 Chromonica" M. Hohner Harmonica with Wooden Box, c. 1960-70s
(2) "American Ace" Hohner Harmonica with Blue Case
"Special 20" Hohner Harmonica with Grey Case
"Echo" Hohner Harmonica with Red Case
"Marine" Hohner Harmonica
Royal Sovereign British Made Pencils Box, c. 1930s
Canadian Centennial Medal
Canadian Korea Medal 1939-1945 War Medal
Canadian Volunteer Service Medal
Ribbon Bar, France and Germany Star
Pins:
Luke Worm "I gave...I feel good!"
The 1878 Societies

London City Press
 Club 50th Anniversary
 Ontario Provincial Flag
 London Ski Club 1946-1996
 London Ski Club 1950-1951
 Royal Canadian Corps of Signals
 Canadian Flag
 Veteran's Day Poppy
 Lapel
 Royal Canadian Legion
 Giants of the North
 Hall of Fame Medal
 General Service
 Noncombatant's
 Certificate of Identity
 Canadian Army
 Overseas Identification Card
 Identification Tag
 Canada Epaulettes

GIFT OF ROBERT FONES, TORONTO, ONTARIO, 2018
 (11) Silverwood's Dairy Advertising Cards, c. 1950-60s

GIFT OF THE ROYAL EDMONTON REGIMENT MILITARY MUSEUM, EDMONTON, ALBERTA, 2018
 Stereoscope Cards:
 Normal School, London, Ont., c. 1910
 New Armories, London, Ont., c. 1910
 Water Works, London, Ont., c. 1910
 Court Buildings, London, Ont., c. 1910
 St. Peters Cathedral,

c. 1910
 Market Scene, London, Ont., c. 1910
 Port Stanley, c. 1910
 Main Building Hospital for the Insane, London, Ont., c. 1910
 Scenes in Victoria Park, c. 1910
 Main Building Victoria Hospital, c. 1910

GIFT OF LEE MYERS, 2018
 Cigar Boxes:
 Olmsted Bros. "Novelty"
 G. Olmsted "Our Pipers"
 W.D. Jones "La Crema"
 The Dyer Cigar Co. "New Coin"
 WM. Ward & Sons "Fan Tail Havana"
 WM. Ward & Sons "Gem"
 J. Smith "Ocean Coil"
 M. Masuret & Co. "Blue Circle Brand"
 Vallens & Co. "Robert Burns Segars"
 London Cigar Factory "Prime Minister"
 George Kelly & Co. "Alero"
 "Tuckett's Club Special"
 M. Garcia Co. "Don Alvano"
 Clark's Cigar Factory "Havana Green"
 Smokes Club House"

GIFT OF KIM STEVENS, LONDON, ONTARIO, 2018
 "Police Permit to Flooded Area" Tag, 1937

ANONYMOUS GIFT, LONDON, ONTARIO, 2018
 Everyday Metrics Slide Chart
 Anchor Die Sets
 Promotional Product
 Sunbeam Bread
 Needle Sleeve
 Ace Precision Made
 Staples Box
 Philishave Electric, Two-Head Razor, 1970-80s
 Ice Cream Scoop
 Infant Dress, 1969-70
 Blue Smocked Infant Dress, 1969-70
 White Baby Shoes, 1969-70
 Baby Knitted Jacket and Booties, 1969-70
 Knitted Baby Cardigan, 1969-70
 Smocked Infant Flannel Nightie, 1969-70
 Infant Trousers with Suspenders, 1969-70
 Raggedy Andy Doll
 Raggedy Ann Doll
 Rag Doll
 MacIntosh Classic II Computer with Accessories, 1991-93
 Computer Software
 Disks:
 Adobe Type Manager (ATM), 1989
 Adobe Illustrator, MacIntosh Version 3, 1987-90



GIFT OF ROSS PARKER, MILL BAY, BRITISH COLUMBIA, 2018
 Dominion Meter
 Works, Gas Meter

Adobe Illustrator,
MacIntosh Version 3.2,
1987-91
Aldus Digital
Darkroom, Version
2.01L, 1988-91
Image Club: typeface
library, 1991
Commodore,
Microsoft Windows,
Version 3.1, 1992
Key Fonts for
MacIntosh: PostScript
(Softkey), c. 1992
Key Fonts for
MacIntosh: True Type
(Softkey), c. 1992
Microsoft MS-DOS 6,
1981-93
Microsoft MS-DOS
6.2, 1981-93
MacIntosh: Adobe
Type Manager, 1989-94
Apple Internet
Connection Kit:
Getting Started, c.
1996
Guide to Apple
Customer Services:
Service, Training,
Support Booklet, 1996

**GIFT OF JIM VERWER,
2018**

Canadian Liquid Air
Plant Cylinder Stencil

**GIFT OF JUDITH AND
WILSON RODGER,
LONDON, ONTARIO,
2018**

"Firstaid" Absorbent
Cotton
Yardley Smelling Salts
Meloids Tin
Sucrets Tin
Aspirin Tin
Absorbine Junior (with
Packaging)
Blue Bell Boot Laces

Belding's Nylon Seam
Binding
Hankettes
Kitchen Food Storage
Canisters, c. 1950
Bead Craft Trims
Beads
Buttons:
Slip-On Apron Hoop
"I'm a Central 9'er"
"Ontario People,
Places, Things: A
Bicentennial Project"
"London Regional
Children's Museum
Grand Opening,
September 1982"
"London, Ontario,
Canada", c. 1987
"CBLFT 40 London"
"Hug a Tree Today"
"Coronation 1953",
1953
Red and White Striped
Boys Romper, 1973-74
Blue Knit Baby
Sweater and Leggings,
1973-74
Blue Corduroy Baby
Romper, c. 1977
Red and Blue Baby Top,
c. 1977
White Baby Romper
and Matching Striped
Top, c. 1977
Girl Guide Uniform,
1951-57
Dog Mat Breaker
Comb
Dog Red Handle Comb
Dog Stainless Steel
Comb (large)
Dog Stainless Steel
Comb (small)
Dog Tow-Sided Brush
Dog Brush
Dog Nail Clippers
Dog Whistle
Dog Tags
Ball Dog Toy

Bunny Squeaky Toy
Dog Leash
Dog Safety Harness
"How to raise and
train a Cairn Terrier"
Booklet
"Grooming Your Cairn"
Booklet
iPhone 3G and
Accessories, 2009
IODE Label Booklet
Eaton's Shopping Bag
Valentine's Day Card
with Envelope
Fabric Handkerchief
Holder
Daniel Green, Hostess
Slippers, 1940-50s
Dresser Set
Cocoa Pot with Four
Cups and Saucers,
1891-32
Venus Woman's Watch



WE THANK OUR VOLUNTEERS for the tremendous work that they do throughout all facets of the Museum. Our volunteers inspire and educate, reach out to our community, and raise money and awareness to support our operations and exhibitions. They offer our organization their skills, their commitment, and their caring. They create a positive impact for visitors to the Museum and within the local arts and culture community.

Joy Abbott
 Suyon (Sue) Ahn
 Tasneem Al Mohamad
 Ann Marie Allen
 Ellen Altpeter
 Stephanie Amatori
 Ken Andrews
 Brenna Ardiel
 Negar Ashrafi
 Ellen Atkinson
 Amanda Baker
 Beverley Ball
 Awadh Baryoum
 Alexandra Beausoleil
 Ron Benner
 Ryan Bennett
 Sharon Berman
 Barbara Bilyea
 Bryson Boyle
 Elizabeth Brandeau
 Eileen Bridle
 Fraser Brown
 Carley Bruckner
 Jessica Burgess
 Ziyun (Angela) Cai
 Aidan Callender
 Heather Carey
 Evelyn Chertkow
 Dominique Cho
 Jamie Clark
 Rebecca Clarke
 Cade Collins
 Jonathan Collins
 Sarah Condy
 Tom Corbett
 Rebecca Coryell
 Estelle Crocker
 Holly Curtis
 Lilly Curtis-Norcross
 Nancy Delorey
 Jacqueline Demendevee
 Colette Derek
 Amanda Deschamps
 Hannah Dimoglou
 Tracy Dobbin
 Vicki Douvalis
 Marion Duncanson
 Olcay Durukan
 Jane Eberhard
 Trevor Egles
 Rebecca Erle

Barry Fair
 Titus Ferguson
 Christine Finch
 Kathy Fox
 Kaela From
 Morgan Gagnon
 Changbin (Andre) Gao
 Peng Gao
 Laurel Gardiner
 Allya Garey
 Whitney Geddes
 Joan Gerber
 Madeleine Ghesquiere
 Anushka Goswami
 Katelyn Graham
 Michela Gregory
 Shane Haniff
 Virginia Hannay
 Denise Hayes
 Nicole He
 Janet Henaff
 Anna Hendrixx
 Isabel Higdon
 Ron Holliday
 Yu (Ashley) Hong
 Dave Jeannette
 Lori Jensen-Brazier
 Zhengyi (Jo) Jin
 Tristan Joseph
 Mohamed Kaddour
 Danielle Kaiser
 Hakan Karatas
 Latifah Kawach
 Esther Kern
 Anosha Khan
 Ann Kirby
 Beth Knazook
 Melissa Knight
 Xiaowen (Polly) Kou
 Gary Krakower
 Laura Landinez
 Wanda Latuszak
 Jon Lavkulich
 May Lee-Jarvis
 Sanhthy (Tim) Limsana
 Serenity Limsana
 Annette Lindsay
 Denise Love
 Deborah Lucas
 Lauren Luchenski
 Dennis Lyu

Jadee Ma
 Zichen (Maggie) Ma
 Sophia MacLean
 Deborah MacLean-Brine
 Debra Majer Fraser
 Grant Maltman
 Aeden Marcus
 Celina Marlatt
 Janet McCrea
 Heather McKay
 Heather McLean
 Alex McVety
 Donna Mercier
 Catherine Meyer
 Karen Monteith
 Natasha Moon
 Maria Moreno
 Diane Morrow
 Della Morton
 Amy Murray
 May Murton
 Melissa Mussell
 Maria Napigkit
 Yasmeen Natsheh
 Gemmill Neilson
 Kathleen Nower
 Linda O'Connor
 Treena Orchard
 Eve Orton
 Sarah Padfield
 Jennifer Parker
 Jhanvi Patel
 Komal Patel
 Faith Patrick
 Rory Patten
 Elizabeth Pelozo
 Qin (Alex) Peng
 Qing Peng
 Jeni Peralta
 Dihnorath Pimentel
 Charlene Pratt
 Maria Qureshi
 Lionel Rabkin
 Kate Radcliffe

Stephanie Radu
 Marcel Robitaille
 Barbara Romero Ferron
 Desaree Roskopf
 Andrea Roulston
 Timothy Rylett
 Jeff Sage
 Zeena Sahota
 Curtis Sands
 Sharon Saunders
 Natalie Schmid
 Meenakshi Sharma
 Ninava Sibo
 Jan Sims
 Juliet Sipila-Montcalm
 Violet Sipila-Montcalm
 Lee Smithson
 Cindy Smythe
 Vanessa Claire Solivio
 Madison Sollars
 Mackenzie Speckner
 Sharon St. Amour
 Liam Stubson
 Katie Sun
 Emily Taylor
 Jessica Thornton
 Raymond Tou
 Leanna Tran
 Ian Tripp
 Rita Turpie
 Donna Vachon
 Paul van der Werf
 Robert van der Westen
 William Van Wieren
 Aarushi Vasudev
 Nada Vukailovic
 Mengyuan (Bella) Wang
 Kerby Waud
 Sylvia West
 Lia Whalen
 Suzanne White Montiel
 Qiaoyu (Grace) Wu
 Xinqi (Claire) Zhang



2018 VOLUNTEER BOARDS & COMMITTEES

Operating Board

Debra Majer Fraser
(Chair)
Anna Maria Hendrikk
(Vice-Chair)
Paul van der Werf
(Past-Chair)
Ryan Bennett
(Treasurer)
Heather Carey
(Secretary)
Lionel Rabkin
(Secretary)
Ken Andrews
Tracy Dobbin
Titus Ferguson
Tristan Joseph
Ann Kirby
Linda O'Conner
Amanda Sutherland
Donna Vachon
Virginia Ridley
Robert van der Westen

Foundation Board

Ken Andrews (President
and Chair)
Nancy Delorey
(Secretary - Treasurer)
Hakan Karatas
Wanda Latuszak
Linda Palmer
Jeff Sage
Lee Smithson

Property and Finance Committee

Ryan Bennett (Chair)
Robert van der Westen
Curtis Sands
Deborah Lucas
Gary Krakower
Vicki Douvalis

Policy Committee

Tracy Dobbin (Chair)
Anna Hendrikk (Chair)
Tom Corbett
Dave Jeannette
Ann Kirby

Volunteer Services Committee

Heather Carey (Chair)
Lionel Rabkin (Chair)
Ellen Altpeter
Jacqueline Demendeev
Laura Landinez
Grace Wu

Governance Committee

Anna Hendrikk (Chair)
Tom Corbett
Tracy Dobbin

Special Events Committee

Linda Palmer (Co-Chair)
Wanda Latuszak (Co-
Chair)
Debra Majer Fraser
Ann Kirby
Amanda Sutherland
Andrea Martens
Joe Wabegijig
Sammy Roach

Material Culture Acquisition Committee

Debra Majer Fraser
(Chair)
Ron Benner
Melissa Knight
Grant Maltman
Stephanie Radu
Rita Turpie
Kerby Waud

Visual Art Acquisition Committee

Holly Curtis (Chair)
Joy Abbott
Jamie Clark
Barry Fair
Ron Holliday
Sharon Saunders
Ian Tripp

Centre at the Forks Campaign

Dr. Ron and Susan
Holliday
(Honorary Chairs)
Ken Andrews
(Co-chair)
Patrick Mahon
(Co-chair)
Judith Rodger
(Co-chair)
Judy Bryant
Wanda Latuszak
Madeline Lennon
Debra Majer Fraser
Paul van der Werf

2018 COMMUNITY ENGAGEMENT

Museum London seeks to create strong ties in our community through our programming, partnerships, and other forms of engagement. We are honoured to have worked on projects with the below organizations in varying capacities.

Grand Theatre
Pride London
Fanshawe College
London Public Library
LUSO (London Urban
Services Organization)
Thames Valley District
School Board

London District Catholic
School Board
The London Society of
Architects
Magisterra Soloists
Association of
Registered Graphic
Designers

Western University
Departments: Visual
Arts, Public Humanities,
SASAH (School for
Advanced Studies in
the Arts & Humanities)
Health Studies
Bimadoshka Pucan
Brescia University
College

Forrat's Chocolates
Inclusive Arts London
Architectural
Conservancy of Ontario
Aaron Hill Indigenous
Storyteller
London Arts Council
London Environmental
Network

2018 MUSEUM LONDON STAFF

Erin Bainbridge
*Muse Sales Clerk
(PT)/Visitor Services
Coordinator (PT)*

Ross Bell
Chief Preparator

Ron Benner
Preparator (PT)

Anita Bidinosti
*Curator of Public
Programs*

Jordan Brennan
*Volunteer and Retail
Sales Coordinator*

Mike Cashmore
Utilities (PT)

Kayla Cotnam
*Muse Sales Clerk
(PT)/Visitor Services
Coordinator (PT)*

Janette Cousins Ewan
Art Registrar

Mark Dancey
Utilities (PT)

Wyn Geleynse
Preparator (PT)

Cassandra Getty
Curator of Art

Krista Hamlin
*Curatorial Assistant,
Exhibitions and
Collections*

Barbara Jessop
Director of Finance

Chuck Kitt
Utilities (PT)

Amber Lloydlangston
*Curator of Regional
History*

Janice Lopes
*A/R Accounting
Assistant*

Celina Marlatt
*Muse Sales Clerk
(PT)/Visitor Services
Coordinator (PT)*

Steve Mavers
Curator of Education

Lisa Mc Dougall
Events Coordinator

Melanie McIlmoyle
*Muse Sales Clerk
(PT)/Visitor Services
Coordinator (PT)*

Brian Meehan
Executive Director

Cydna Mercer
Head of Administration

Bob Osthoff
Preparator (PT)

Troy Ouellette
Preparator (PT)

Holly Pichette
*Muse Sales Clerk
(PT)/Visitor Services
Coordinator (PT)*

Deepmala Pradhan
*Muse Sales Clerk
(PT)/Visitor Services
Coordinator (PT)*

Tania Rodriguez
*Muse Sales Clerk
(PT)/Visitor Services
Coordinator (PT)*

Jamie Ryan
*Curatorial Assistant,
Programming and
Engagement*

Mitra Shreeram
Marketing Coordinator

Lucas Stenning
Lead Designer

Mardi Tiesma Stewart
*A/P Accounting Clerk/
Supporter Coordinator*

Melanie Townsend
*Head of Exhibitions and
Collections*

Matt Trueman
Preparator (PT)

Jeff Willmore
Preparator (PT)

Billy Bert Young
Preparator (PT)

Kevin Zacher
*Historical Museums
Registrar*

IN 2018, MUSEUM LONDON

welcomed
82,707
visitors

had over
189
volunteers
donate
11,190
hours of their
time

mounted
13
exhibitions

gained
1,875
new
supporters

displayed
528
works of art

received
11,724
students for
school tours
& educational
programs

displayed
564
historical
artifacts

released
1
publication

Thank You to Our Donors

Museum London is grateful to the individuals, corporations, foundations, and other organizations for their contributions received in the calendar year of 2018. Their ongoing generosity makes it possible for us to connect our public with art, artists, artifacts, exhibitions, and a variety of programs. Thank you for enhancing and extending the Museum's impact within the London community and beyond.

**Chair's Circle
\$10,000+**

The Great-West Life
Assurance Company

**Benefactor
\$1,000 - \$2,499**

Sheila Ayearst
Wilson and Judith
Rodger
Schacter Medicine
Professional
Corporation
Sandra Lee Simpson

Patron**\$500 - \$999**

Guy Anderson
Wyn and Lucretia
Geleynse
Michael and Debra
Menear
Peter Milligan

Sponsor**\$250 - \$499**

Deanne Buller
Brenda Focht
Virginia Hannay

Sustaining**\$100 - \$249**

Tammy Adkin
Carolyn Beacroft
Jan Devereux
Sierra Donnelly
Helen Fielding
Peter and Libby Fowler
Mary Beth Jennings
Silvia Langer
Zachary Kenneth
McLaren
Jim Nagy
Mary Portis
Fred and Mary
Possmayer

Ernest Redekop
Gregg Redner
Jesse Sargeant
Western Fair District

**Friendship
Up to \$99**

Anneliese Bode
Alexandre Boussetta
Marianne Pflieger
Nancy Trumper
Carroll Willer

**Donors to the Centre at
the Forks Campaign****Visionary
\$500,000 and above**

Cultural Spaces

Leader**\$250,000 - \$499,999**

Great-West Life,
London Life, Canada
Life
The Lawson Foundation
– Miggsie Lawson Fund

Champion**\$100,000 - \$249,999**

Alan and Phyllis Cohen
Good Foundation Inc.
Richard and Beryl
Ivey, through London
Community Foundation
Museum London
Foundation

Builder**\$50,000 - \$99,999**

Lerners LLP
Rob and Mim O'Dowda
Sifton Family

Foundation
Paul van der Werf and
Nadia Joseph
Volunteer Committee to
Museum London

Investor**\$25,000 - \$49,999**

Jackman Foundation
(courtesy of Reverend
Edward J.R. Jackman)
S. Elizabeth Moore,
through London
Community Foundation
John R. and Margaret
Nicholson, through
London Community
Foundation
Wilson and Judith
Rodger, through London
Community Foundation
TD Bank Group

Patron**\$10,000 - \$24,999**

Joy and Tony Abbott
Anonymous
Anonymous
Claire Anderson
Bob and Donna Bourne
Charles and Diana
Coates and Family
Ann and Bill Fleming
Susan and Ron Holliday
Peter and Leslie
Johnson
Brent and Marilyn
Kelman
Thomas and Madeline
Lennon
Brian Meehan and Kate
Young
Pedros family
Linda and Cecil
Rorabeck
Bob and Debbie Schram
Lorraine Ivey
Shuttleworth
The Walter J. Blackburn
Foundation
Ian B. Tripp and the late
Flora J. Tripp

Partner**\$5,000 - \$9,999**

Betsy and Sheldon
Aaron
Ian and Lorna Anderson
Ken and Martha
Andrews
Jim and Halina Bain
BlueStone Properties
Inc.
Judy and Murray Bryant
Cambia Development
Foundation
Robert and Mary Fay
Colcleugh
Douglas and Barbara
Del Net
Carole Farber
Guardian Capital
Johnson Electric Inc.
Mary Ellen Kirk
Marianne A. Larsen
MacTop Publishing Inc.
Doug and Mary Ellen
Marshman
Cydna Mercer
Michael Milde and
Valerie Mills-Milde
Eleanor Schnall
Janet E. Stewart
The Patrick Hodgson
Family Foundation

Friend**\$1,000 - \$4,999**

Paul and Mary Ann
Adams
Suzanne P. Allan,
through London
Community Foundation
Anonymous
Stewart and Beth Bailey
Michael D. Bechard
Andrew and Nancy
Bjerring
Tom and Penny Brown
Kathryn Brush
Marilyn Campbell Davis
and Philip Davis
James and Janet Caskey
Beryl and Noam
Chernick
Perry and John Clouston
Kelly Webster and Tom

2018 DONORS CONTINUED

Corbett
Bill and Cecilia Davies
Debra Dawson and
Susan Grindrod
Laurence de Looze and
Aara Suksi
Alberto and Lorisa
Delitala
Sean Cunningham and
Nancy Delorey
Lynne D. and Joseph J.
DiStefano
Joel Faflak
Titus and Rachel
Ferguson
Mary Flannigan Hockin
Mark Flink and Helen
Berman
Libby and Peter Fowler
Deborah L. Fox
Kathy Fox
Nathan Garber
Beth and David Girvan
Gail Goldrath
John and Kathie Gonder
Glenn Hardman and
Carol Hooper
William Harper and
Susan Pepper
Heather Inman
Danielle and Greg Kaiser
Carol Kehoe
Wanda Latuszak
Don and Sandra Letton
Margaret Limacher
Anthony and Betsy
Little
Barbara and Patrick
Mahon
Deb Majer Fraser and
Alistair Fraser
Iva Majer
Tom Majer
Michael and Debra
Menear
Mary Lou Nicholson
Linda O'Connor
George and Toni Plaxton
John and Jackie Porter
Edward and Dawn Ralph
Lili Rechnitzer in
memory of Peter
Craig and June
Richardson

James W. Robson
Thelma and David
Rosner
Jeff and Lindsay Sage
John and Toulia Sangster
Otilia and Jeff Santin
Erica Shuttleworth
Shelly and Bob Siskind
Sara Steers and Robert
Bozak
Jo Ann Sweeney
Donald and Elenor Taves
M.J. Toswell
Tradition Construction
Inc.
Hiedi and Bill Vamvalis
VersaBank
Visual Arts Department,
Western University
Voices.com
Diane and Bill Wall
Judy White
Ronald and Carroll
Willer
Rod and Faye Willis
Mark Wilton
Ailene Wittstein
Bonnie Wludyka
Betty Anne Younker

Up to \$999

Susan Agranove and
the late Larry Agranove,
through London
Community Foundation
web.isod.es
Evelyn Chertkow
and the late Gerald
Chertkow
Janet Clark
Dianne Cunningham
Vi and Richard Darling
Eileen Dobell
Vicki Douvalis
Helen Driediger
Bill and Betty Duffield
Maya Dynna
Peter Fendrich
Jane Hair
Jeanette Harvey
Ann Jenkins
Mary Beth Jennings
Frank Kearney
Magdalena Lagerlund
Silvia Langer

Michael and Barbara
Lefcoe
Mary Portis
Leemala Ragubance
Catherine Ross
Howard and Lynda
Rundle
Patricia Savage
Karen Schindler
Terry Sefton
Susan Linda Shkrum
Joseph and Joy
Sommerfreund
Charles Sa Family
Keith St. Lawrence
Sarah Stewart
Veronica and Thomas
Stoiber
Ian and M.J. Stone
Ken Sumnall
James and Beverly
Thompson
Janet and Paul Tufts
Katherine Turner
Shiela West
Denise and Ron Wexler
David Wistow and Kerry
Skinner

Endowment Funds

Beryl Ivey Endowment
Fund
John H. and Elizabeth
Moore Acquisition Fund
Moore Collection
Endowment Fund
Operating Endowment
Fund
Nancy Poole Acquisition
Fund
Volunteer Committee
to Museum London
Acquisition Endowment
Fund

In appreciation of those who have supported Museum London with lifetime gifts of \$25,000 or more

3M Canada Inc.
Alan and Phyllis Cohen
Bernard and Norton

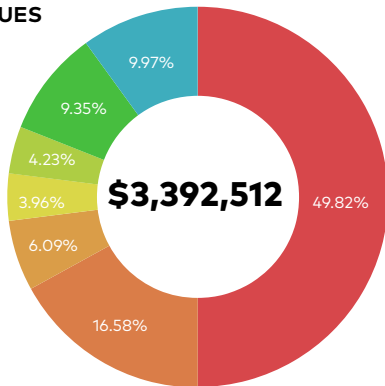
Wolf Family Foundation
CFPL Broadcasting
Limited
C.S.A.L Canadian Social
Analysts Limited
Ellis -Don Construction
Limited
Friends of Eldon House
Good Foundation Inc.
Ivest Corporation
Richard and Beryl Ivey
Labatt Ontario
Breweries
Miggie Lawson
Lerners LLP
London Free Press
London Life Insurance
Company
Eleanor Miller
S. Elizabeth Moore
Allen and Elaine
Philbrick
W.R. and Nancy Poole
Erica Shuttleworth
Laura Shuttleworth
Lorraine Shuttleworth
Smart and Caring
Community Fund
Don and Joan Smith
The Lawson Foundation
The London Community
Foundation
The Great-West Life
Assurance Company
The Richard and Jean
Ivey Fund
Volunteer Committee of
Museum London
Walter and Duncan
Gordon Foundation
Estate of Alfred McInroy
Cuddy
Estate of Amelia Lucy
Ronalds Harris Little
Estate of Nora C. E.
Dawson
Estate of Patricia
Dorothy O'Brien
Brian Meehan and Kate
Young
Sifton Family
Foundation
TD Bank Group

2018 OPERATING REVENUES & EXPENDITURES

Museum London received core support from the City of London in the amount of \$1,690,199. In addition, \$300,000 was received from the Canada Council for the Arts, \$155,949 from the Ontario Arts Council, \$51,954 from the Ontario Ministry of Tourism and Culture, \$33,650 from the Department of Canadian Heritage and \$7,475 from Federal Employment Grants. The funding was supplemented by the support of our volunteers and staff in fundraising, by personal and corporate donations, exhibition and program sponsorship, and support from our endowment funds.

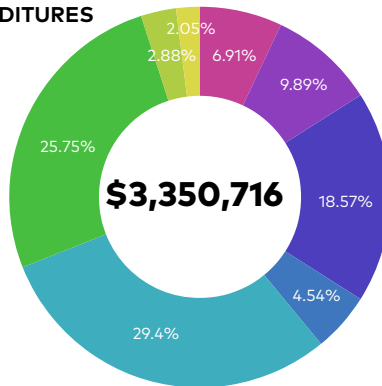
Notes: In addition to the revenues noted below, the Museum also received donated art and artifacts valued at \$289,685.

REVENUES



■ City of London	\$1,690,199	49.82%
■ Federal and Provincial Grants	\$562,369	16.58%
■ Donations and Fundraising	\$206,497	6.09%
■ Exhibition Sponsorship and Program Revenues	\$134,475	3.96%
■ Catering and Rental	\$143,568	4.23%
■ Transfers from Deferred Revenue and Endowment Funds	\$317,188	9.35%
■ Other	\$338,216	9.97%
Total Revenues	\$3,392,512	

EXPENDITURES



■ Exhibitions	\$231,561	6.91%
■ Public Programs	\$331,388	9.89%
■ Curatorial and Collections Management	\$622,330	18.57%
■ Promotion and Fundraising	\$152,271	4.54%
■ Operations	\$985,053	29.40%
■ General and Administration	\$862,900	25.75%
■ Catering and Rentals	\$96,528	2.88%
■ Acquisitions	\$68,685	2.05%
Total Expenditures	\$3,350,716	

As well as the Operating Fund, the Museum has a Building Fund and an Investment Fund.

The value (less amortization) of land, building, furniture, and equipment as of December 31, 2018 was \$10,931,771. Building Fund expenditures were \$1,513,401, of which \$115,831 was directed to refurbishing the building and funded by the City of London. \$1,397,570 was related to the Centre at the Forks, funded through the Capital Campaign. In 2018, \$716,451 was raised for a Campaign total of \$3,277,066.

The Investment Fund has a balance of \$5,802,065 at December 31, 2018 of which \$2,561,089 is reserved as an operating endowment and \$3,240,976 which is restricted funds set aside for specific purposes.

A complete set of statements is available upon request.

OUR MISSION

We inspire and educate our community by preserving and sharing our art and history.

OUR VISION

Where our community discovers exceptional art, rich history, and new possibilities. For more than 70 years, Museum London has preserved, interpreted and shared the story of London and Londoners through the exhibition of art and artifacts and the presentation of public programs. We are a non-profit charitable organization that acquires and exhibits art and artifacts for the purpose of study, education and enjoyment.

Museum London is home to 45,000+ regional historical artifacts detailing a fascinating record of London's economic achievements, and our citizens' accomplishments. Our art collection has more than 5,000 regional and Canadian works. Museum London has a rich tradition of being at the heart of London's cultural community, connecting artists with audiences, the community with its heritage, and the past with the present and future.

We gratefully acknowledge the support of the City of London, the Canada Council for the Arts, the Ontario Arts Council and the Ontario Ministry of Tourism and Culture.

ACKNOWLEDGEMENT

In the spirit of Truth and Reconciliation we would like to acknowledge that Museum London operates within the traditional territory of the Anishinaabeg, Haudenosaunee, Attawandaron (Neutral), and Wendat peoples. This territory is covered by the Upper Canada Treaties. This territory is the homeland of the Chippewas of the Thames First Nation, Oneida Nation of the Thames, and Munsee Delaware Nation. We also recognize the contributions of Métis, Inuit, and other Indigenous peoples, both in shaping and strengthening this community in particular, and our province and country as a whole.

MUSEUM LONDON

421 Ridout Street North,
London, Ontario N6A 5H4

museumlondon.ca

tel 519-661-0333



Canada Council
for the Arts

Conseil des arts
du Canada



ONTARIO ARTS COUNCIL
CONSEIL DES ARTS DE L'ONTARIO
an Ontario government agency
un organisme du gouvernement de l'Ontario



Ontario

Cover: Sky Glabush, *Shadows*, 2018, acrylic on cotton and wool, Collection of Museum London, Purchase, 2018

